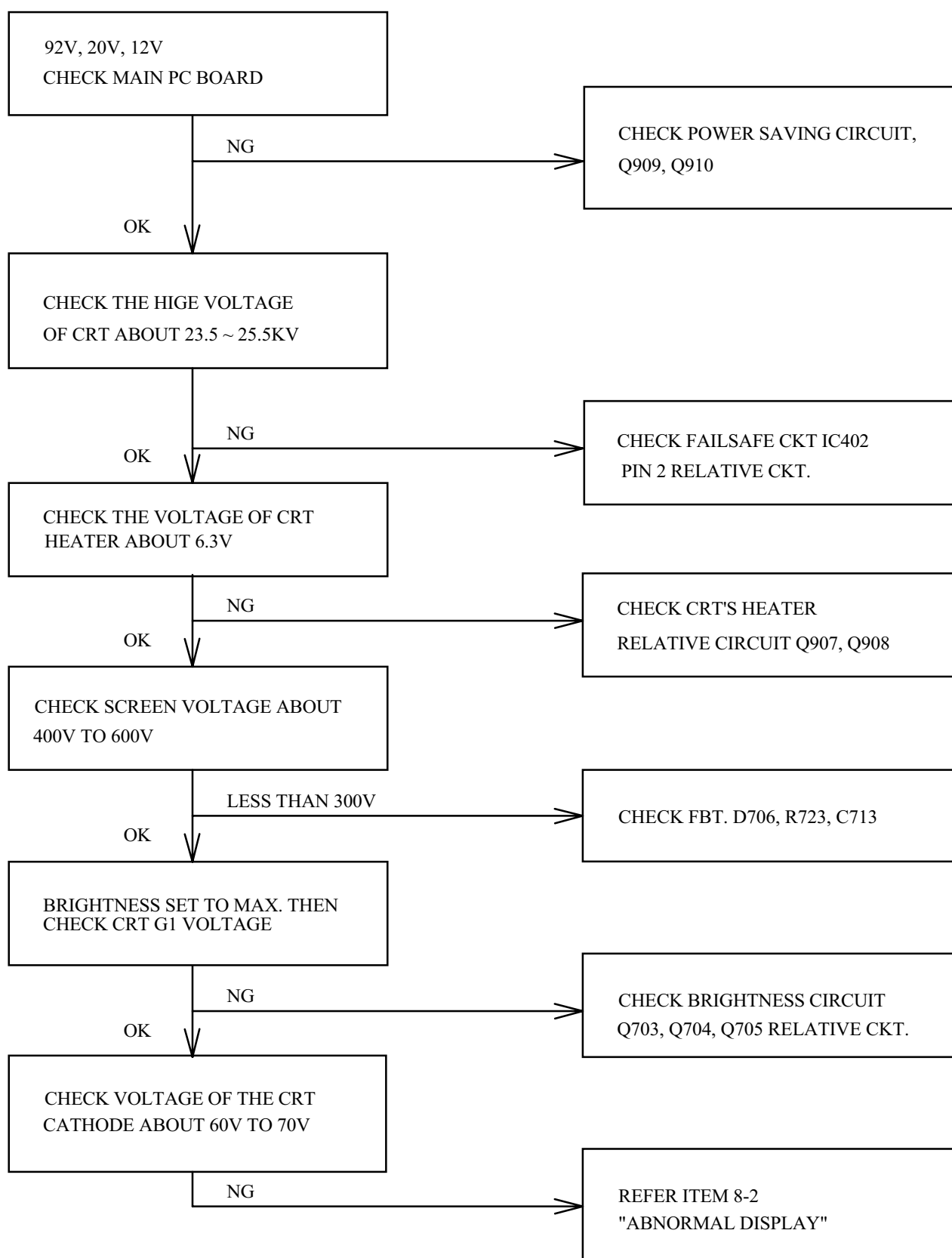
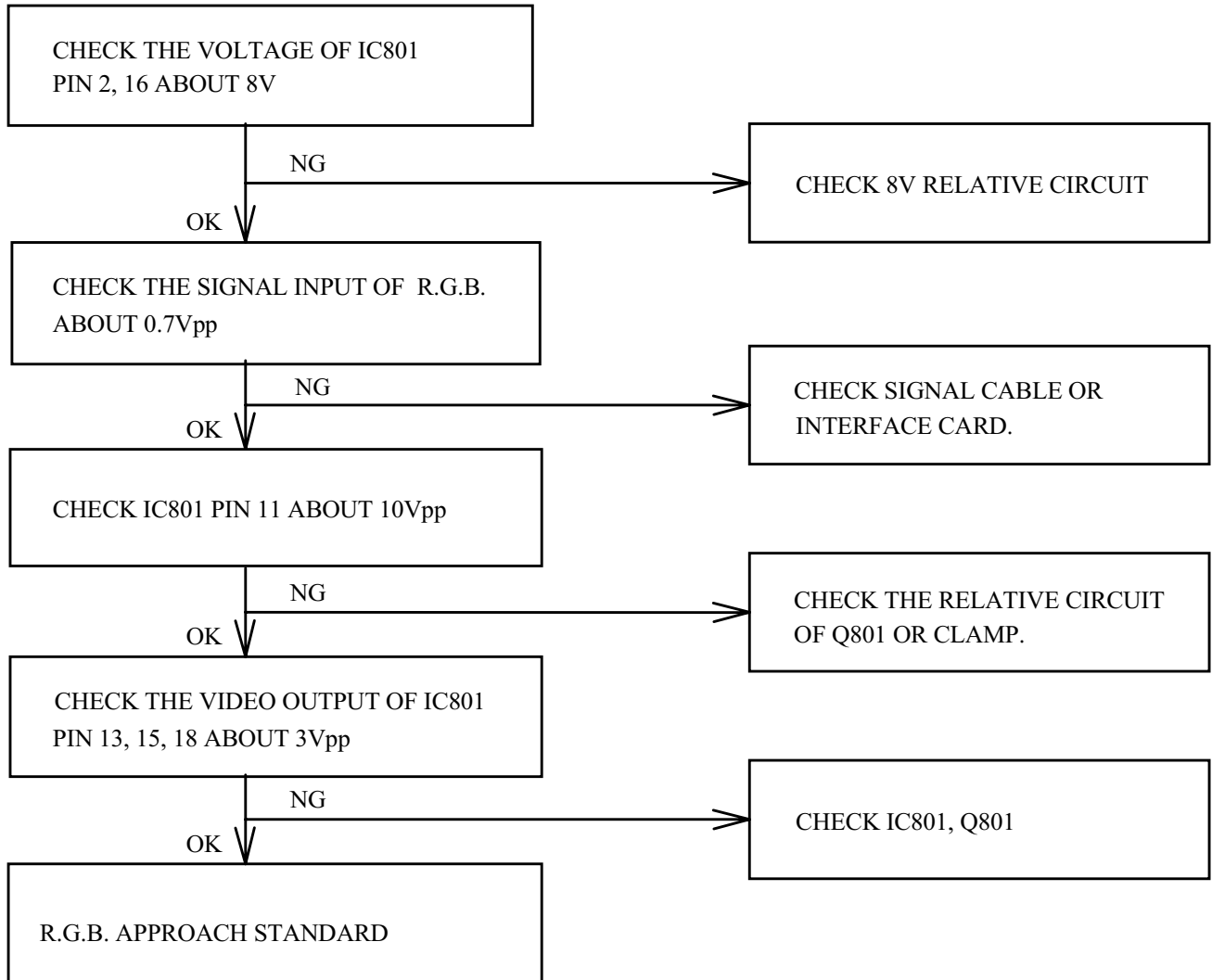


6.TROUBLE SHOOTING CHART

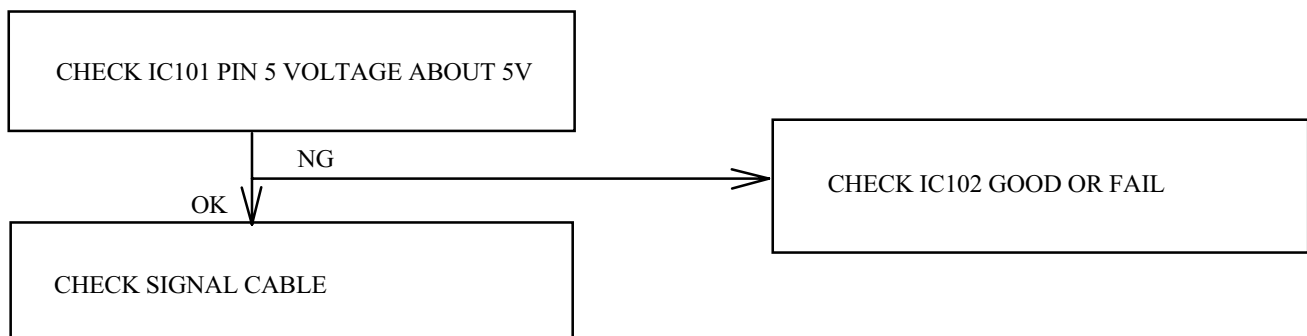
6-1 NO RASTER, CRT RELATIVE CIRCUIT PROBLEMS



2.ABNORMAL VIDEO LEVEL ON SCREEN

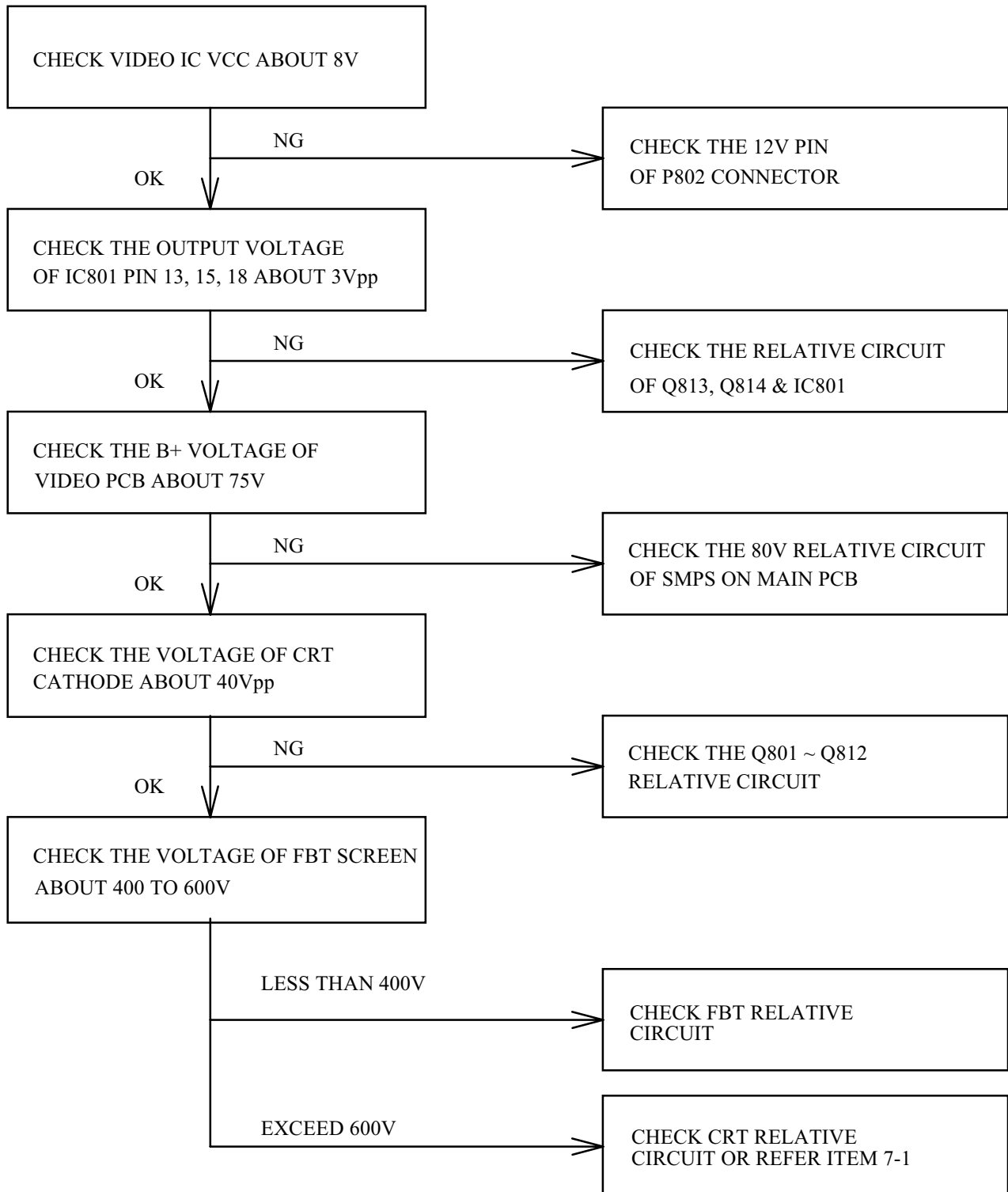


3. ABNORMAL DDC (PLUG & PLAY)

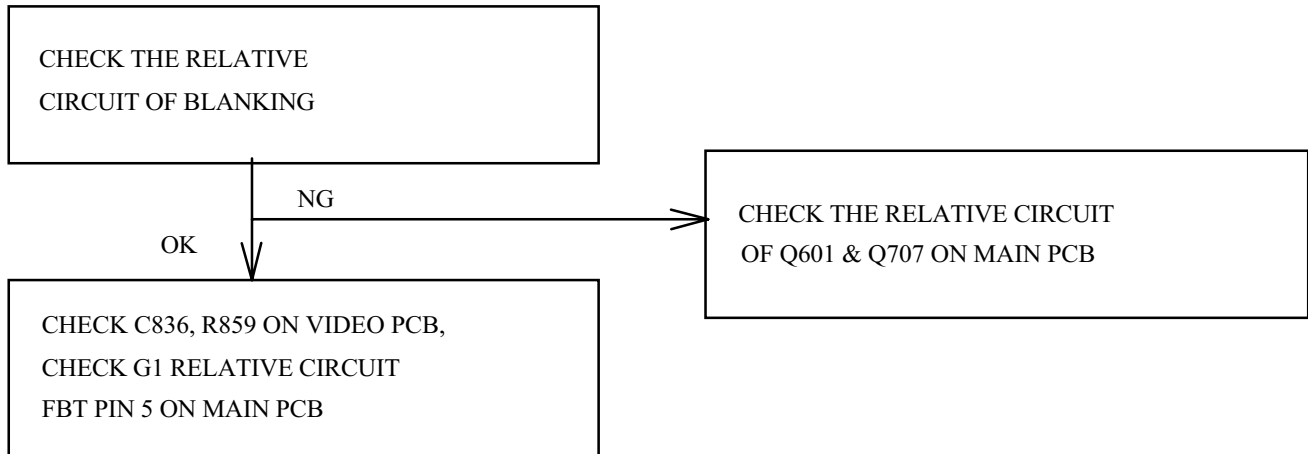


6-2 ABNORMAL DISPLAY

1.NO SIGNAL ON SCREEN

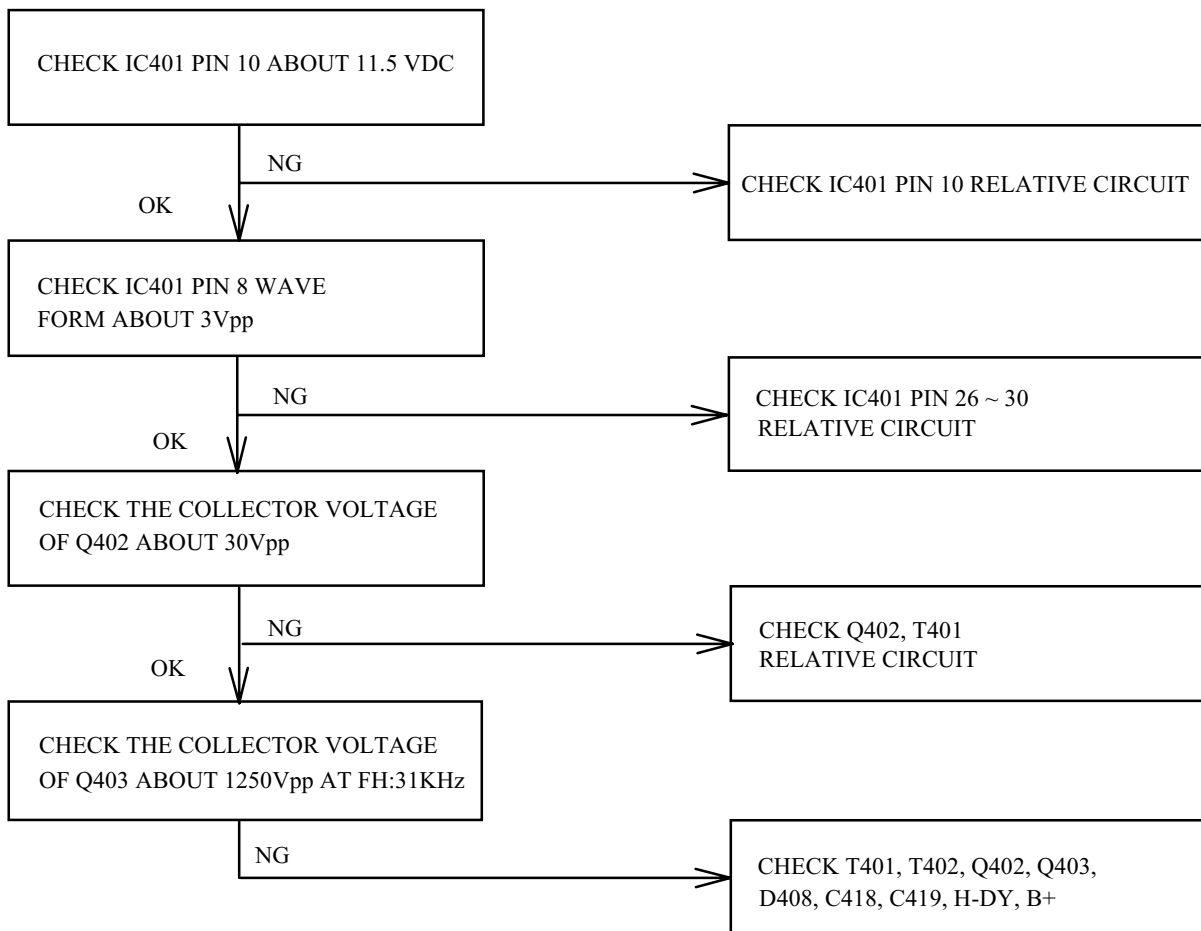


6-3 NO BLANKING



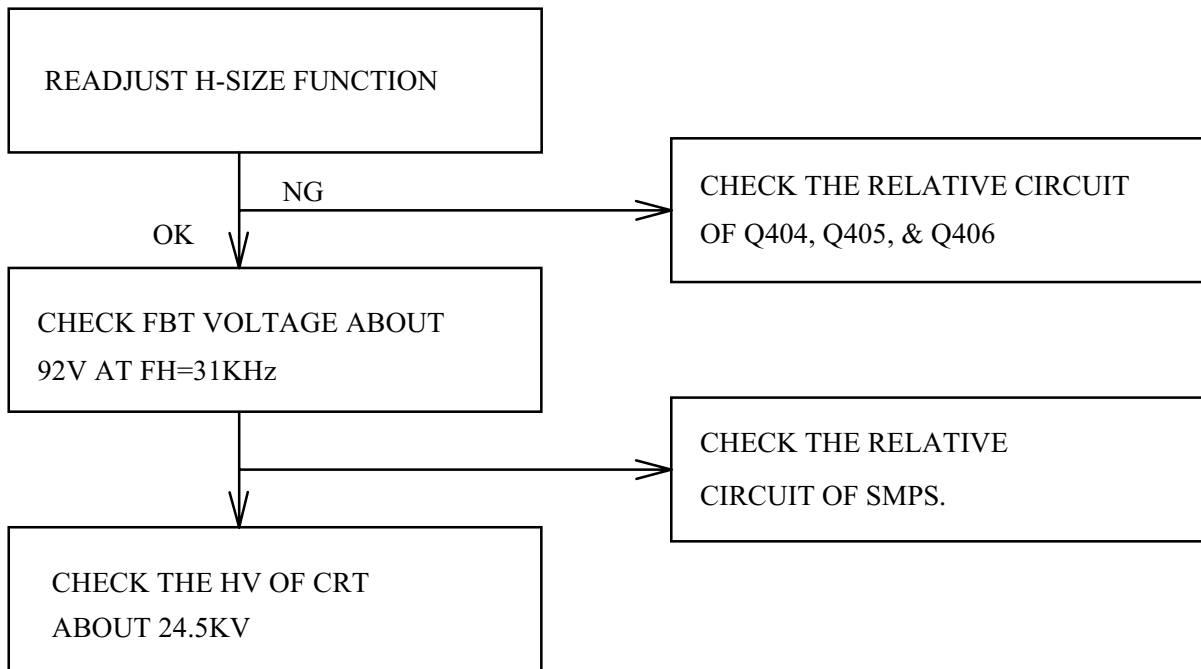
6-4 HOR./OSC/DEF/HV CIRCUIT FAULT

1. NO RASTER (DISCONNECT WITH SIGNAL CABLE)

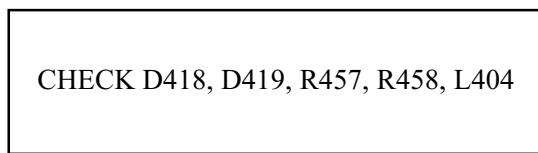


6-5 ABNORMAL HORIZONTAL DEFLECTION

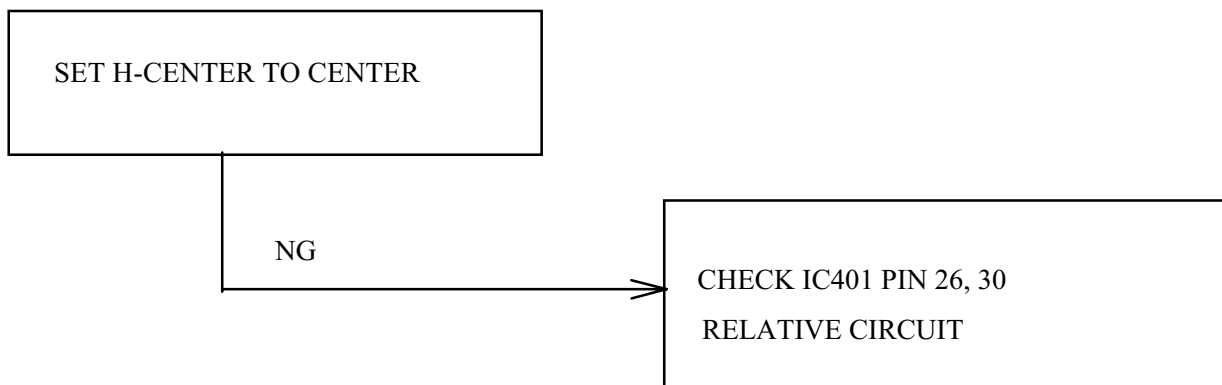
1. ABNORMAL HORIZONTAL SIZE



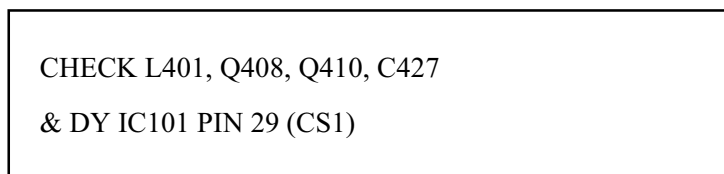
2. ABNORMAL HORIZONTAL RASTER CENTER



3. ABNORMAL HORIZONTAL VIDEO CENTER

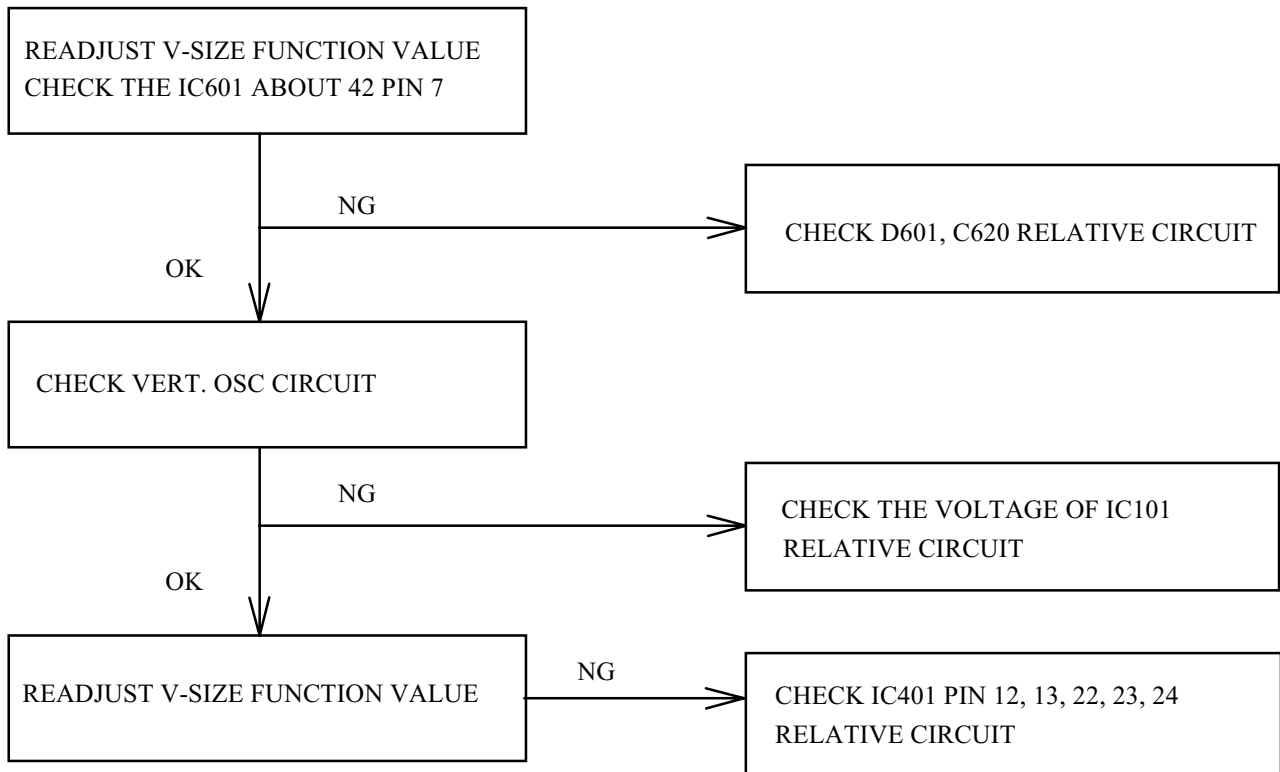


4. ABNORMAL HORIZONTAL LINEARITY

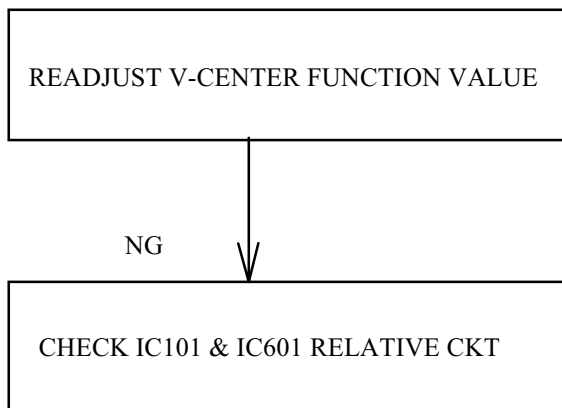


6-6 ABNORMAL VERTICAL SCANNING

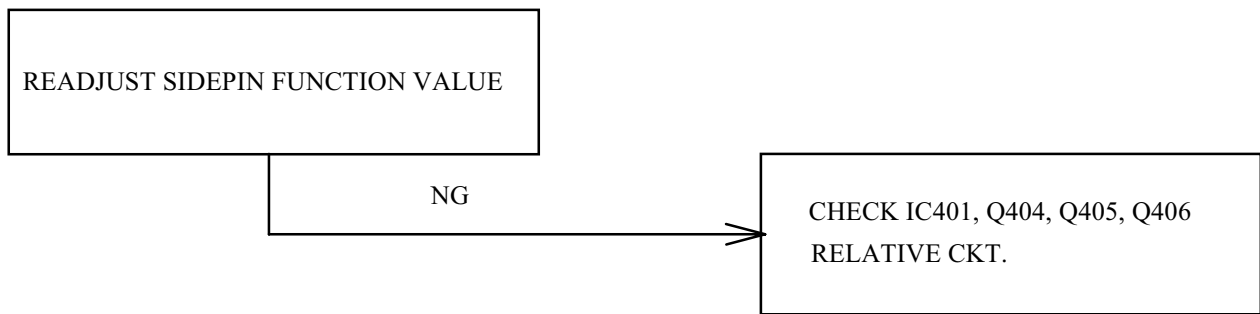
1. ABNORMAL VERTICAL SIZE



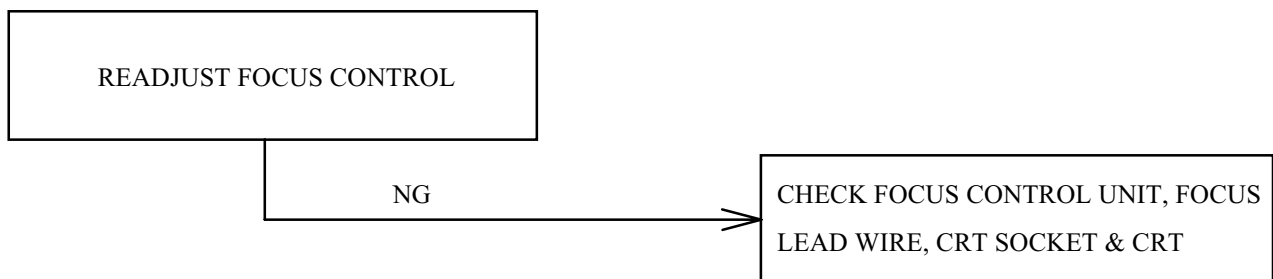
2. VERTICAL CENTER



6-7 SIDE-PIN CUSHION DISTORTION



6-8 POOR FOCUS



6-9 POWER SUPPLY TROUBLE SHOOTING CHART

BEFORE CHECK SW.REG. PLEASE REFER TO THE POWER SUPPLY BLOCK DIAGRAM

POWER SUPPLY OUTPUT: (A) VARIABLE OUTPUT : 90V - 160V

(DEPENDING UPON H.SYNC FREQUENCY)

(B) CONSTANT OUTPUT : 6.3V, 14.5V, 20V, 82.5V

